

# Eklavya Eklavya 2021

## ONE BOW GURU MANTRA GOAL

Get a Chance to Learn from **India's Best Teachers** & Crack **JEE ADVANCED 2021**

**Vedantu's Eklavya 2021 is a Specialized Program for JEE ADVANCED**, designed and headed by Co-Founder, IIT alumnus and Master Teacher Anand Prakash. Get mentored by **Top JEE Experts**, who have produced JEE Advanced **AIR 1, 2, 4, 7**, & many more.

---

### Anand Prakash

Co-Founder, Vedantu  
IIT- Roorkee



## Our Previous **EKLAVYANs** & Their Achievements

Student Name	Main Rank	Advanced Rank
Chirag Jain	731	41
Prakhar Agrawal	445	177
Tanmay Gangwar	2133	227
Aditya Kukreja	1772	635
Eknor Singh	3574	1243
Aditya Gupta	14275	1326

**547 JEE Advanced Selections in 2020**

**JOIN NOW**



## Study Materials

- [JEE Main & Advanced – Free Study Material](#)
- [NEET UG – Free Study Material](#)
- [NCERT Solutions for Class 1 to 12](#)
- [NCERT Books PDF for Class 1 to 12](#)
- [ICSE & ISC Free Study Material](#)
- [Free Study Material for Kids Learning \(Grade 1 to 5\)](#)
- [Olympiad Free Study Material](#)
- [Reference Books \(RS Aggarwal, RD Sharma, HC Verma, Lakhmir Singh, Exemplar and More\)](#)
- [Previous Year Question Paper CBSE & State Boards](#)
- [Sample Papers](#)
- [Access All Free Study Material Here](#)

## JEE-Main-26-08-2021-Shift-2 (Memory Based)

### PHYSICS

**Question:** Temperature of equal masses of 3 substances A, B, C are  $10^{\circ}\text{C}$ ,  $20^{\circ}\text{C}$  &  $30^{\circ}\text{C}$  respectively. When A & B are mixed, the equilibrium temperature is  $16^{\circ}\text{C}$ . When B & C are mixed it is  $26^{\circ}\text{C}$ . Find equilibrium temperature, when A & C are mixed.

**Options:**

- (a)  $15.2^{\circ}\text{C}$
- (b)  $20.4^{\circ}\text{C}$
- (c)  $23.8^{\circ}\text{C}$
- (d)  $26.5^{\circ}\text{C}$

**Answer:** (c)

**Solution:**

(A)	(B)	(C)	
$10^{\circ}\text{C}$	$20^{\circ}\text{C}$	$30^{\circ}\text{C}$	
$S_A$	$S_B$	$S_C$	(specific heat capacity)

$$m_A = m_B = m_C = m$$

When A and B are mixed final temperature will be  $16^{\circ}\text{C}$ .

$\therefore$  heat gain by A = Heat lost by B.

$$mS_A(16-10) = mS_B(20-16)$$

$$S_A = \frac{2}{3}S_B \dots (1)$$

Similarly when B and C are mixed final temperature will be  $26^{\circ}\text{C}$

$$\therefore mS_B(26-20) = mS_C(30-26)$$

$$S_C = \frac{3}{2}S_B \dots (2)$$

When A & C are mixed let find final temperature is T.

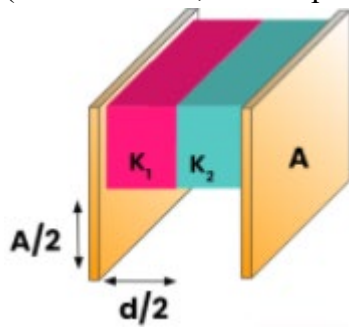
$$mS_A(T-10) = (30-T)mS_C$$

$$\frac{2}{3}S_B(T-10) = \frac{3}{2}S_B(30-T)$$

$$T = 23.8^{\circ}\text{C}$$

**Question:** Find equivalent capacitance of the given setup.

(Plate area = A, Plate separation = d)

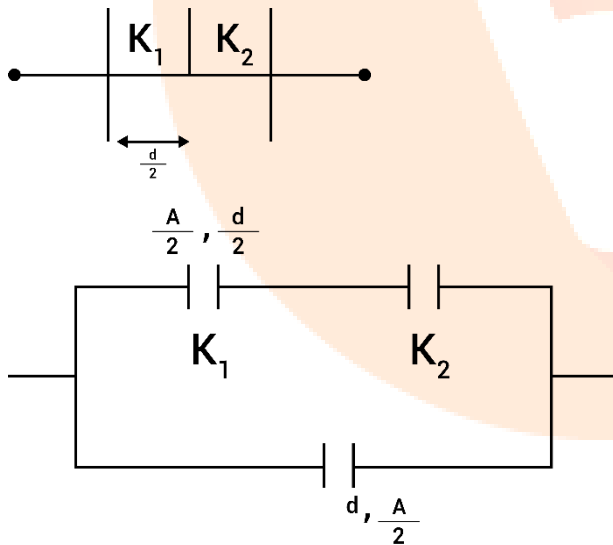


**Options:**

- (a)  $\left(\frac{k_1 k_2}{k_1 + k_2} + \frac{1}{2}\right) \frac{A \epsilon_0}{d}$
- (b)  $\left(\frac{k_1 k_2}{k_1 + k_2} + 2\right) \frac{A \epsilon_0}{d}$
- (c)  $\frac{2k_1 k_2}{k_1 + k_2} \frac{A \epsilon_0}{d}$
- (d)  $\frac{k_1 k_2}{2(k_1 + k_2)} \frac{A \epsilon_0}{d}$

**Answer:** (a)

**Solution:**



$$C_{eq} = \frac{\epsilon_0 \frac{A}{2}}{\frac{d}{2k_1} + \frac{d}{2k_2}} + \frac{\epsilon_0 A}{2d}$$

$$= \frac{\epsilon_0 A k_1 k_2}{d(k_1 + k_2)} + \frac{\epsilon_0 A}{2d}$$

$$= \frac{\epsilon_0 A}{d} \left( \frac{k_1 k_2}{k_1 + k_2} + \frac{1}{2} \right)$$

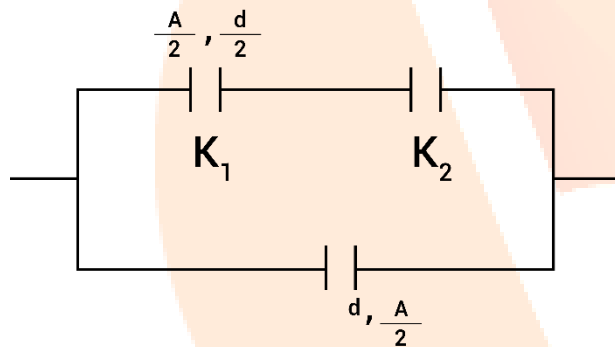
**Question:** A ball of mass  $M$  is rotating in a conical pendulum by a string of length  $L$ . If radius of circular path is  $\frac{L}{\sqrt{2}}$ , find the velocity of mass

**Options:**

- (a)  $\sqrt{gL}$
- (b)  $\sqrt{\frac{gL}{2}}$
- (c)  $\sqrt{2gL}$
- (d)  $\sqrt{\frac{gL}{\sqrt{2}}}$

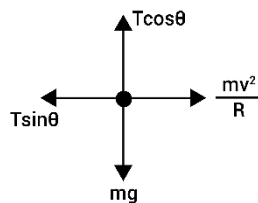
**Answer:** (d)

**Solution:**



$$R = \frac{L}{\sqrt{2}} = L \sin \theta$$

$$\therefore \theta = 45^\circ$$



$$T \cos \theta = mg$$

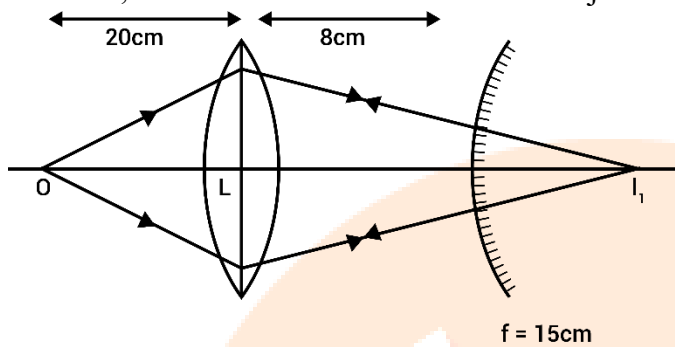
$$T \sin \theta = \frac{mv^2}{R}$$

$$\tan \theta = \frac{v^2}{Rg} \Rightarrow 1 = \frac{v^2}{Rg}$$

$$v^2 = \sqrt{Rg}$$

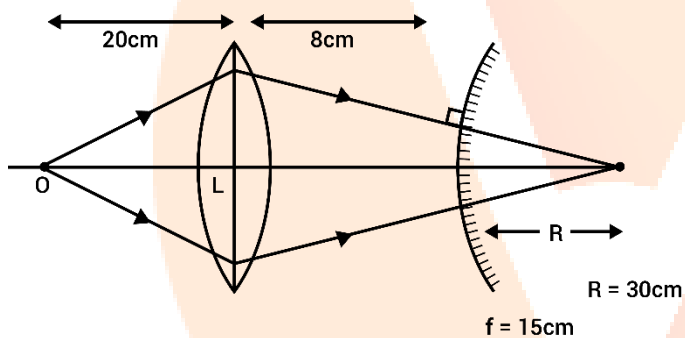
$$= \sqrt{\frac{gL}{\sqrt{2}}}$$

**Question:** The image is formed on the object itself on the given arrangement. If mirror is removed, what is the distance between the object and the image?



**Answer:** 58 cm

**Solution:**



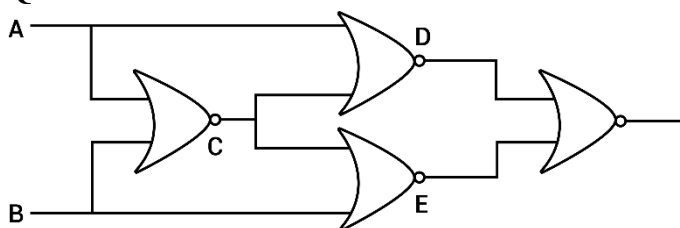
Since image is formed on the object itself therefore incident rays on the mirror are perpendicular to the mirror.

∴ they will meet at the center of curvature of the mirror.

If mirror is removed then the refracted rays from the lens will meet at a distance 38 cm.

∴ distance between object and image will be  $38 + 20 = 58$  cm

**Question:** How will the truth table look like?

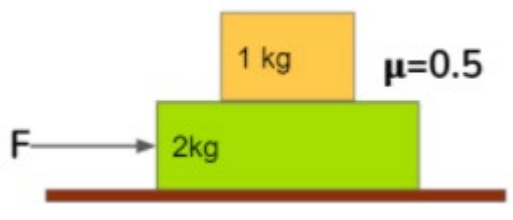


**Answer:**

**Solution:**

A	B	$C = \overline{A+B}$	$D = \overline{A+C}$	$E = \overline{C+B}$	$y = \overline{D+E}$
0	0	1	0	0	1
0	1	0	1	0	0
1	0	0	0	1	0
1	1	0	0	0	1

**Question:** Find the maximum value of F so that there is no relative slip between the blocks?



**Answer:** 15 N

**Solution:**

Maximum acceleration of 1 kg block =  $\mu g = 0.5 \times 10$

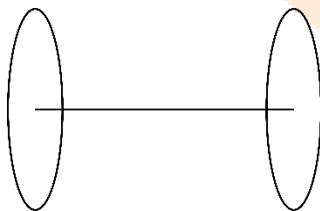
$$= 5 \text{ m/s}^2$$

$\therefore$  Maximum acceleration of whole system must be  $5 \text{ m/s}^2$

$$\text{So } F = (M + m)a$$

$$F = 3 \times 5 = 15 \text{ N}$$

**Question:** The two oppositely charged rings of radii a are separated by s. Find the potential difference between center of the ring? (magnitude of charge is q)



$$\text{Answer: } 2kq \left( \frac{1}{a} - \frac{1}{\sqrt{a^2 + s^2}} \right)$$

**Solution:**

Potential at centre of

$$\text{Ring 1} = \frac{kq}{a} + \frac{k(-q)}{\sqrt{a^2 + s^2}}$$

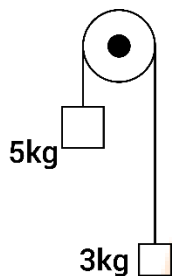


$$\text{Ring 2} = \frac{kq}{\sqrt{a^2 + s^2}} + \frac{k(-q)}{a}$$

$$\text{Potential difference} = \left[ \frac{kq}{a} + \frac{k(-q)}{\sqrt{a^2 + s^2}} \right] - \left[ \frac{kq}{\sqrt{a^2 + s^2}} + \frac{k(-q)}{a} \right]$$

$$= 2kq \left( \frac{1}{a} - \frac{1}{\sqrt{a^2 + s^2}} \right)$$

**Question:** A wire is supporting two masses on a pulley as shown. If breaking stress of wire is  $\frac{2400}{\pi} \text{ Nm}^{-2}$ . Find minimum radius of wire, so that it does not break.



**Options:**

- (a) 6.25 cm
- (b) 11 cm
- (c) 9.5 cm
- (d) 12.5 cm

**Answer:** (d)

**Solution:**

$$5g - T = 5a$$

$$T - 3g = 3a$$

$$\Rightarrow a = \frac{5g - 3g}{5 + 3} = \frac{g}{4}$$

$$\Rightarrow T = 3g + \frac{3g}{4} = \frac{15g}{4}$$

$$\text{Stress} = \frac{T}{A} \Rightarrow \frac{15g}{4(\pi r^2)} = \frac{2400}{\pi}$$

$$\Rightarrow r^2 = \frac{15g}{4 \times 2400}$$

$$\Rightarrow r = 12.5 \text{ cm}$$

**Question:** Match the dimensions of the physical quantities.

Magnetic flux	$M^1 L^2 T^{-2} A^{-1}$
Magnetic intensity	$L^{-1} A^1$
Intensity of magnetization	$L^{-1} A^1$
Magnetic induction	$M^1 T^{-2} A^{-1}$

**Solution:**

$$F = qVB$$

$$\Rightarrow B = \frac{F}{qV}$$

$$\text{Magnetic Induction} = [MLT^{-2}A^{-1}T^{-1}L^{-1}T]$$

$$[B] = [MT^{-2}A^{-1}]$$

$$\text{Magnetic flux} = BA$$

$$[\phi] = [MT^{-2}A^{-1}L^2]$$

$$\text{Magnetization } [I] = \frac{\vec{M}}{V} = \frac{AL^2}{L^3} = [AL^{-1}]$$

Dimension of magnetic intensity and intensity of magnetization are same.

**Question:** An EM wave is propagating along X-axis, such that  $\vec{E} = 800 \sin(kx - \omega t) \hat{j}$ . If an electron is projected with velocity  $3 \times 10^7 \text{ ms}^{-1}$ . Along Y-axis, then the maximum magnetic force experienced by electron is

**Options:**

- (a)  $1.28 \times 10^{-17} \text{ N}$
- (b)  $2.4 \times 10^{-16} \text{ N}$
- (c)  $3.2 \times 10^{-18} \text{ N}$
- (d) None

**Answer:** (a)

**Solution:**

$$E_0 = CB_0$$

$$\Rightarrow B_0 = \frac{E_0}{C}$$

$$\vec{F}_{\text{max}} = qVB_0$$

$$= qV \frac{E_0}{C} = \frac{1.6 \times 10^{-19} \times 3 \times 10^7 \times 800}{3 \times 10^8}$$

$$= 1.28 \times 10^{-17} \text{ N}$$

**Question:** Transmitter antenna height = 50 m, receiver antenna height = 80 m, radius of earth = 6400 km. Find the maximum distance between them for L.O.S. communication?

**Answer:** 57.3 km

**Solution:**

$$h_T = 50 \text{ m}$$

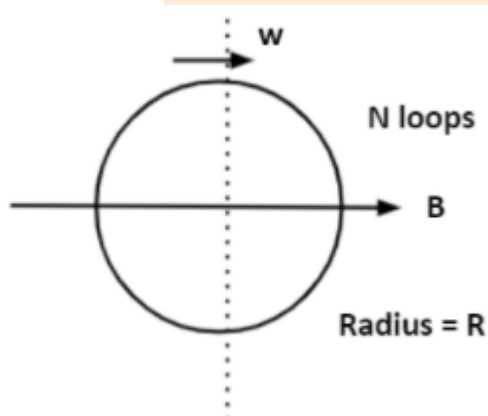
$$h_R = 80 \text{ m}$$

$$R_E = 6.4 \times 10^6 \text{ m}$$

For L.O.S. communication

$$\begin{aligned} d_{\max} &= \sqrt{2h_T R_E} + \sqrt{2h_R R_E} \\ &= \sqrt{2 \times 50 \times 6.4 \times 10^6} + \sqrt{2 \times 80 \times 6.4 \times 10^6} \\ &= 10^4 \sqrt{6.4} + 4 \times 8 \times 10^3 \\ &= 8(4 + \sqrt{10}) \times 10^3 \text{ m} \\ &= 57.3 \text{ km} \end{aligned}$$

**Question:** Find the maximum induced emf?



**Answer:**  $\pi R^2 B \omega n$

**Solution:**

At any time  $t$

Angle rotated  $\theta = \omega t$

Flux ( $\phi$ ) =  $nBA \cos \theta$

$$= nBa \cos(\omega t)$$

$$\text{Induced emf} = -\frac{d\phi}{dt} = -nBA\omega \sin(\omega t)$$

$$\text{Maximum value of emf} = nBA\omega$$

$$= nB\pi R^2 \omega$$

**Question:**  $x_1 = \frac{5}{2}[\sin(2\pi t) + \cos(2\pi t)]$ ,  $x_2 = 5\left[\sin\left(2\pi t + \frac{\pi}{4}\right)\right]$

Find ratio of amplitude of the given motion?

**Options:**

(a)  $\sqrt{2} : 1$

(b)  $2 : 1$

(c)  $1 : \sqrt{2}$

(d)  $1 : 2$

**Answer:** (c)

**Solution:**

$$x_1 = \frac{5}{2}[\sin(2\pi t) + \cos(2\pi t)]$$

$$x_2 = 5\left[\sin\left(2\pi t + \frac{\pi}{4}\right)\right]$$

Resultant amplitude of first motion

$$A_1 = \frac{5}{2}\sqrt{1^2 + 1^2} = \frac{5\sqrt{2}}{2}$$

Amplitude of second motion

$$A_2 = 5$$

$$\text{Ratio } \frac{A_1}{A_2} = \frac{5\sqrt{2}}{2 \times 5} = \frac{1}{\sqrt{2}}$$

**Question:** A cylinder of height  $L$ , mass  $M$  & Radius  $\frac{L}{\sqrt{2}}$  has MOI  $1.2 \text{ kg m}^2$  about an axis at a distance  $L/2$  parallel to axis of cylinder. If length of cylinder is 80 cm, find the density of cylinder.

**Options:**

(a)  $5.3 \text{ kg m}^{-3}$

(b)  $4.6 \text{ kg m}^{-3}$

(c)  $10.23 \text{ kg m}^{-3}$

(d) None

**Answer:** (b)

**Solution:**

MOI of cylinder about an axis at  $L/2$  distance from the axis of cylinder

$$I' = I_{COM} + Md^2$$

$$1.2 = \frac{MR^2}{2} + \frac{ML^2}{4}$$

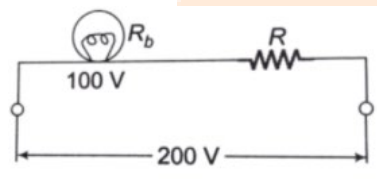
$$1.2 = \frac{ML^2}{4} + \frac{ML^2}{4} = \frac{ML^2}{2}$$

$$\Rightarrow M = \frac{2.4}{L^2} = \frac{2.4}{64 \times 10^{-2}} = 3.75 \text{ kg}$$

$$\rho = \frac{M}{V} = \frac{3.75}{\pi \times \frac{L^2}{2} \times L} = \frac{7.5}{\pi L^3} = 4.66 \text{ kg m}^{-3}$$

**Question:** A bulb with rating 100V, 500W is to be connected in series with an unknown resistance and a battery of 200 Volts.

What must be the value of this unknown resistance, such that the bulb still dissipates 500 W.



**Options:**

- (a)  $25 \Omega$
- (b)  $50 \Omega$
- (c)  $20 \Omega$
- (d)  $10 \Omega$

**Answer:** (a)

**Solution:**

$$R_b = \frac{100 \times 100}{500} = 20 \Omega$$

For bulb to consume 500 W power, voltage drop at bulb should be equal to 100 V.

i.e. unknown resistance should also have voltage drop of 100 V.

This is possible when

$$R = R_b = 20 \Omega$$

**Question:** Find the amplitude of the resultant wave formed by the two waves given as

$$y_1 = 5 \sin(\omega t - kx), y_2 = 12 \sin\left(\omega t - kx + \frac{2\pi}{3}\right)$$

**Options:**

- (a)  $\sqrt{109}$

(b)  $\sqrt{100}$

(c)  $\sqrt{169}$

(d)  $\sqrt{196}$

**Answer:** (a)

**Solution:**

$$\text{Phase difference } \phi = \frac{2\pi}{3}$$

$$A = \sqrt{A_1^2 + A_2^2 + 2A_1A_2 \cos \phi}$$

$$A = \sqrt{5^2 + 12^2 + 2 \times 5 \times 12 \times \cos\left(\frac{2\pi}{3}\right)}$$

$$A = \sqrt{25 + 144 - 60}$$

$$A = \sqrt{109}$$

**Question:** For a second's pendulum how much will the measured value of the time of a day differ by if length increases by 0.1 cm?

**Answer:** 43.2 s

**Solution:**

$$T = 2\pi \sqrt{\frac{l}{g}}$$

$$\therefore \frac{\Delta T}{T} = \frac{1}{2} \frac{\Delta L}{l}$$

$$\therefore \frac{\Delta T}{86400} = \frac{1}{2} \frac{10^{-3}}{1}$$

$$\therefore \Delta T = 43.2 \text{ s}$$

**Question:** Two vectors  $\vec{A}$  &  $\vec{B}$  having same magnitude are at an angle  $120^\circ$  with each other.

Find the angle between  $\vec{A}$  &  $\vec{A} - \vec{B}$

**Options:**

(a)  $120^\circ$

(b)  $30^\circ$

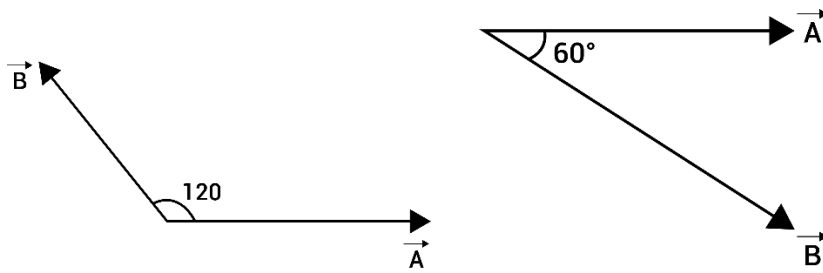
(c)  $60^\circ$

(d)  $45^\circ$

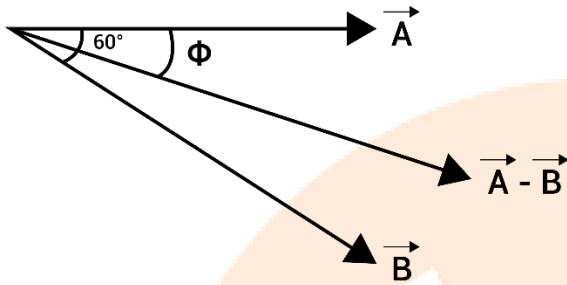
**Answer:** (b)

**Solution:**

$$|\vec{A}| = |\vec{B}| \quad \theta = 120^\circ$$



$$\vec{A} - \vec{B} = \vec{A} + (-\vec{B})$$



$$\tan \phi = \frac{B \sin \theta}{A + B \cos \theta} = \frac{A \sin 60}{A + A \cos 60}$$

$$\tan \phi = \frac{\frac{A\sqrt{3}}{2}}{A + \frac{A}{2}} = \frac{1}{\sqrt{3}}$$

$$\phi = 30^\circ$$

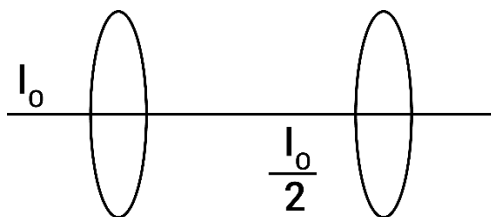
**Question:** An unpolarised light of Intensity  $I_0$  is incident on two polaroids placed co-axially such that  $\frac{I_0}{2}$  intensity is received on screen. By what angle the polaroid placed close to screen should be rotated so that intensity on screen becomes  $\frac{3}{8}I_0$

**Options:**

- (a)  $30^\circ$
- (b)  $60^\circ$
- (c)  $45^\circ$
- (d)  $90^\circ$

**Answer:** (a)

**Solution:**



$$\frac{I_0}{2} \cos^2 \theta = \frac{I_0}{2}$$

$$\theta = 0^\circ$$

So, angle was  $0^\circ$

If it will be rotated by  $\theta$

$$\frac{I_0}{2} \cos^2 \theta = \frac{3I_0}{8} \Rightarrow \cos^2 \theta = \frac{3}{4} \Rightarrow \theta = 30^\circ$$

**Question:** The de Broglie wavelength of an electron is  $\lambda$  & has energy  $E$ . If the de Broglie wavelength is reduced by 25%, then how much extra kinetic energy will the electron have now?

**Options:**

(a)  $\frac{16}{9}E$

(b)  $\frac{7}{9}E$

(c)  $\frac{9}{7}E$

(d)  $\frac{9}{16}E$

**Answer:** (b)

**Solution:**

$$\text{As } \lambda = \frac{h}{\sqrt{2mE}}$$

$$E = \frac{h^2}{2m\lambda^2}$$

$$\text{New } E' = \frac{h^2}{2m(0.75\lambda)^2}$$

$$\text{Extra kinetic energy} = E' - E$$

$$= \frac{h^2}{2m(0.75\lambda)^2} - \frac{h^2}{2m\lambda^2}$$

$$= \frac{h^2 - 0.56h^2}{2m\lambda^2(0.5625)}$$

$$= \frac{0.43}{0.56} \frac{h^2}{2m\lambda^2}$$

$$= 0.77E$$

Hence (b)  $\frac{7}{9}E$  is correct



**Question:** A container has 1 mole of some gas and 2 mole of other gas has volume  $1\text{m}^3$  at  $27^\circ\text{C}$ . Find the pressure of the gas in kPa?

**Answer:** (7.4 Kpa)

**Solution:**

Using  $PV = nRT$

$$P_1 = \frac{nRT_1}{V} = \frac{1 \times R \times 300}{1}$$

$$P_2 = \frac{2 \times R \times 300}{1}$$

Using Mixture law,  $P = P_1 + P_2$

$$= 3 \times R \times 300$$

$$= 3 \times 8.31 \times 300$$

$$= 7479 \text{ Pa}$$

$$= 7.4 \text{ kPa}$$

**Question:** In a refrigerator, temperature inside is  $-10^\circ\text{C}$  and room temperature is  $25^\circ\text{C}$ . If electrical input power is 35 watts. At what rate is the heat rejected?

**Answer:** (298 watts)

**Solution:**

$$\text{Coefficient of Performance} = \frac{\text{Heat Rejected}}{\text{Work done}}$$

$$T_0 + 273 + 25 = 298\text{K}$$

$$T_{\text{refrigerator}} = 273 - 10 = 263\text{K}$$

$$\frac{\text{Heat Rejected}}{\text{Work done}} = \frac{T_0}{T_0 - T_{\text{refrigerator}}}$$

$$= \left( \frac{298}{298 - 263} \right)^{35}$$

Heat Rejected = 298 w

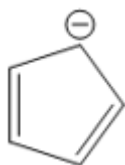
## JEE-Main-26-08-2021-Shift-2 (Memory Based)

### CHEMISTRY

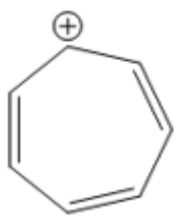
**Question:** Which of the following is not aromatic?

**Options:**

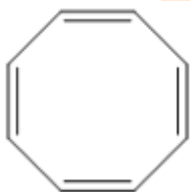
(a)



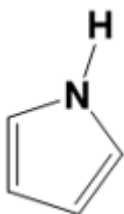
(b)



(c)

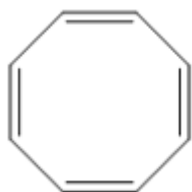


(d)



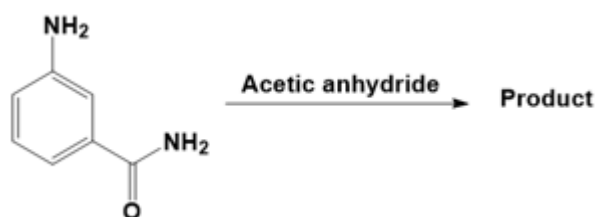
**Answer:** (c)

**Solution:**



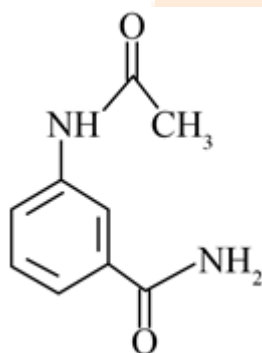
It follows  $4n\pi$  electrons rule, as it has  $8\pi$  electrons  
 So, it is nonaromatic in nature due to tub shaped form  
 Rest other follows  $(4n + 2)\pi$  electrons rule  
 Hence, are aromatic in nature

**Question:**

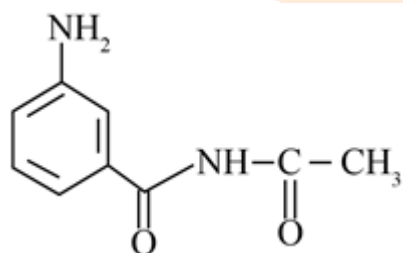


**Options:**

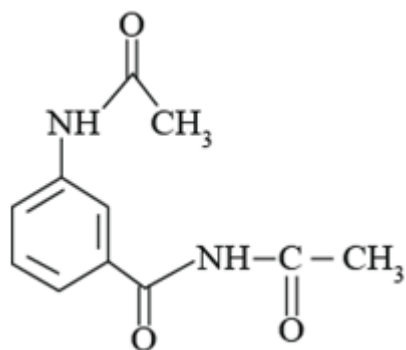
(a)



(b)



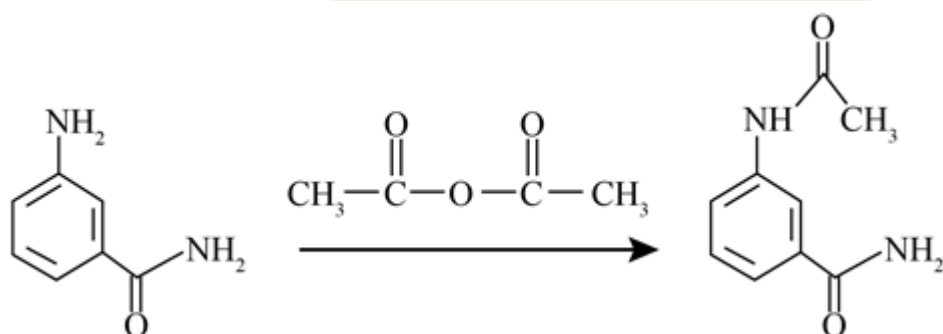
(c)



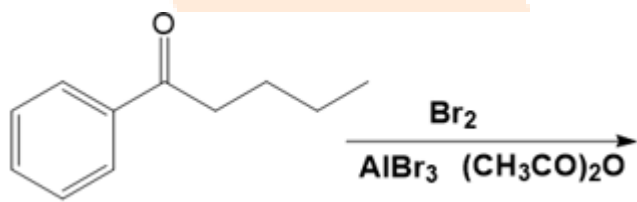
(d) No reaction

**Answer:** (a)

**Solution:**

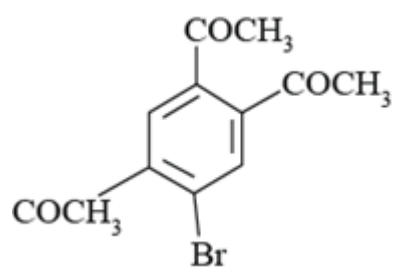


**Question:**

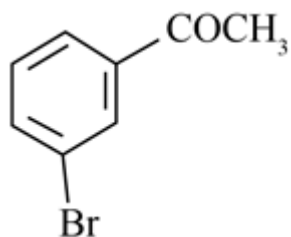


**Options:**

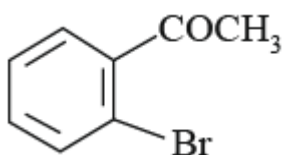
(a)



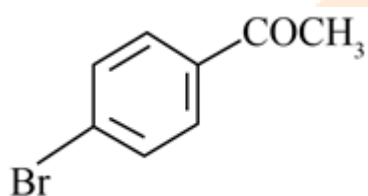
(b)



(c)

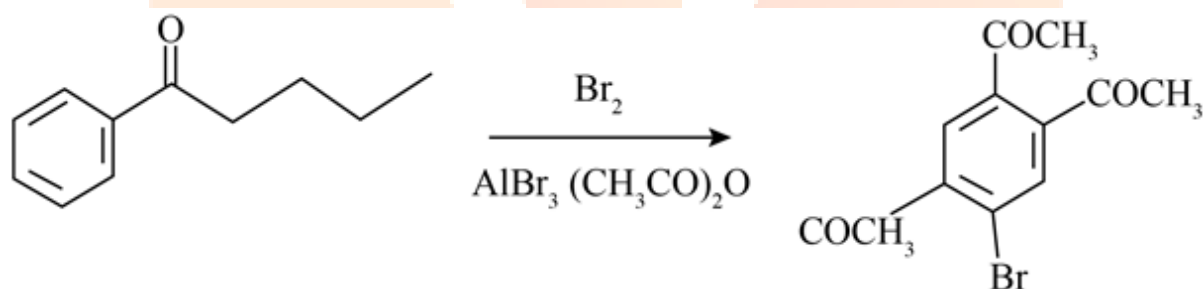


(d)



**Answer:** (a)

**Solution:**



**Question:** Which of the following is a negative sol?

**Options:**

- (a)  $\text{AgNO}_3$  in KI solution
- (b) KI in  $\text{AgNO}_3$  solution
- (c) AgI in contact with  $\text{AgNO}_3$
- (d)  $\text{Fe}(\text{OH})_3$  in  $\text{FeCl}_3$  solution

**Answer:** (a)

**Solution:** AgI will form and the common ion  $\text{I}^-$  will be adsorbed which makes sol negative

**Question:** What is the number of non-ionizable hydrogen in the compound formed upon hydrolysis of  $\text{PCl}_5$ ?

**Options:**

- (a) 3
- (b) 0
- (c) 2
- (d) 1

**Answer:** (b)

**Solution:**  $\text{PCl}_5$  on hydrolysis produces  $\text{H}_3\text{PO}_4$  which has zero non-ionisable hydrogen. All hydrogen atoms are ionizable in  $\text{H}_3\text{PO}_4$ .

**Question:** The set of elements known as chalcogens is:

**Options:**

- (a) O, S, Se, Te
- (b) S, Cl, Br
- (c) S, O, P, Mo
- (d) Na, Br, Cl, I

**Answer:** (a)

**Solution:** Group 16 elements are known as chalcogens

**Question:** A solution contains 83g of ethylene glycol and 625 g water, find the freezing point.  $K_f = 1.86 \text{ K Kg mol}^{-1}$

**Options:**

- (a) 269 K
- (b) 277 K
- (c) 273 K
- (d) 265 K

**Answer:** (a)

**Solution:** moles of ethylene glycol =  $\frac{83}{62}$

$$\text{molality} = \frac{\frac{83}{625}}{\frac{62}{625}} = \frac{83}{62} \times \frac{1000}{625}$$

Thus,

$$\Delta T_f = K_f \cdot m$$

$$= 1.86 \times \frac{83}{62} \times \frac{1000}{625} = 3.984$$

$$\text{Thus, } T_f = 273 - 3.984 = 269.016 \text{ K}$$

**Question:** The number of stereoisomers of the given structure



**Options:**

- (a) 5
- (b) 2
- (c) 3
- (d) 4

**Answer:** (c)

**Solution:** 1,2-Dimethylcyclopropane is a cycloalkane consisting of a cyclopropane ring substituted with two methyl groups attached to adjacent carbon atoms. It has three stereoisomers, one cis-isomer and a pair of trans-enantiomers, which differ depending on the orientation of the two methyl groups.

**Question:**  $A + B \rightleftharpoons C + D$ . Initially all are 1 M.  $K_C = 100$ . Find the final concentration of D

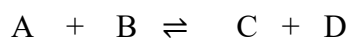
**Options:**

- (a) 9/11
- (b) 20/11
- (c) 2/11
- (d) 11/20

**Answer:** (b)

**Solution:** Here,  $Q = \frac{[C][D]}{[A][B]} = 1$

Thus, reaction will proceed in forward reaction



Initial 1      1      1      1

Final 1-x   1-x   1+x   1+x

$$k_c = \frac{(1+x)^2}{(1-x)^2} \Rightarrow 100 = \frac{(1+x)^2}{(1-x)^2}$$

$$\Rightarrow \frac{1+x}{1-x} = 10$$

$$\Rightarrow 1+x = 10 - 10x$$

$$\Rightarrow 11x = 9$$

$$\Rightarrow x = \frac{9}{11}$$

$$\therefore [D] = 1+x = 1 + \frac{9}{11} = \frac{20}{11}$$

**Question:** Peroxide ( $O_2^{2-}$ ) and superoxide ions ( $O_2^-$ ) are, respectively:

**Options:**

- (a) Diamagnetic and diamagnetic
- (b) Paramagnetic and paramagnetic
- (c) Paramagnetic and diamagnetic
- (d) Diamagnetic and paramagnetic

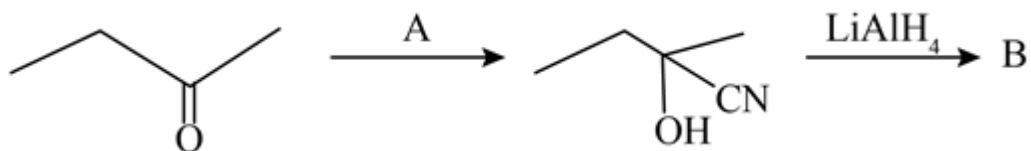
**Answer:** (d)

**Solution:** Peroxide ion ( $O_2^{2-}$ ) does not have any unpaired electrons and is diamagnetic

The superoxide ion ( $O_2^-$ ) will have one unpaired electron and therefore will be paramagnetic

**Question:**

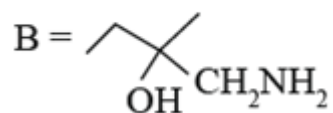




**Options:**

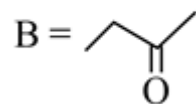
(a)

A = KCN



(b)

A = KCN



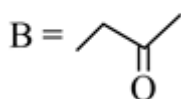
(c)

A = PCC



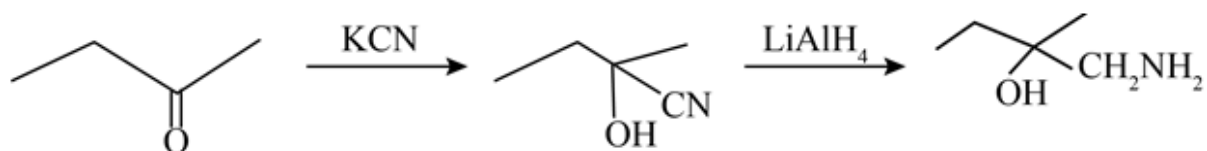
(d)

A = PCC

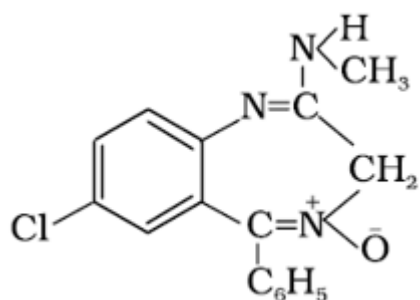


**Answer:** (a)

**Solution:**



**Question:** Chlordiazepoxide



is a :

**Options:**

- (a) Analgesic
- (b) Antipyretics
- (c) Tranquilizer
- (d) Antibiotics

**Answer:** (c)

**Solution:** Tranquilizer, drug that is used to reduce anxiety, fear, tension, agitation, and related states of mental disturbance. Tranquilizer fall into two main classes, major and minor. For example - chlordiazepoxide

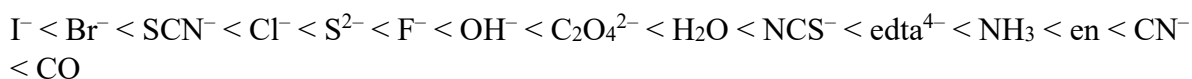
**Question:**  $[\text{CoF}_6]^{3-}$  ;  $[\text{Co}(\text{H}_2\text{O})_6]^{3+}$  ;  $[\text{Co}(\text{NH}_3)_6]^{3+}$  ;  $[\text{Co}(\text{en})_3]^{3+}$ . What is the order of CFSE?

**Options:**

- (a)  $[\text{CoF}_6]^{3-} < [\text{Co}(\text{H}_2\text{O})_6]^{3+} < [\text{Co}(\text{NH}_3)_6]^{3+} < [\text{Co}(\text{en})_3]^{3+}$
- (b)  $[\text{Co}(\text{en})_3]^{3+} < [\text{Co}(\text{NH}_3)_6]^{3+} < [\text{Co}(\text{H}_2\text{O})_6]^{3+} < [\text{CoF}_6]^{3-}$
- (c)  $[\text{Co}(\text{H}_2\text{O})_6]^{3+} < [\text{CoF}_6]^{3-} < [\text{Co}(\text{NH}_3)_6]^{3+} < [\text{Co}(\text{en})_3]^{3+}$
- (d)  $[\text{Co}(\text{NH}_3)_6]^{3+} < [\text{CoF}_6]^{3-} < [\text{Co}(\text{H}_2\text{O})_6]^{3+} < [\text{Co}(\text{en})_3]^{3+}$

**Answer:** (a)

**Solution:** For the same central metal ion, the CFSE increases with increase in strength of the ligand. The order of strength is given by spectrochemical series:



Thus, the order of CFSE of given complexes will be  $[\text{CoF}_6]^{3-} < [\text{Co}(\text{H}_2\text{O})_6]^{3+} < [\text{Co}(\text{NH}_3)_6]^{3+} < [\text{Co}(\text{en})_3]^{3+}$

**Question:** S1: Heavy water is used in exchange reactions for the study of reaction mechanisms.

S2: Heavy water has more density than H<sub>2</sub>O.

**Options:**

- (a) Both S1 and S2 are correct.
- (b) S1 is correct but S2 is incorrect.
- (c) S1 is incorrect but S2 is correct.
- (d) Both S1 and S2 are incorrect.

**Answer:** (a)

**Solution:** S1: Heavy water is extensively used as a moderator in nuclear reactors and in exchange reactions for the study of reaction mechanisms.

S2: Density (298K)/g cm<sup>-3</sup>:

Water 1.0000

Heavy water: 1.1059

**Question:** S1: Sucrose is a non-reducing sugar

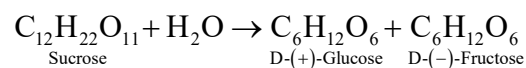
S2: In sucrose, glycosidic linkage is between C1 of β-D glucose and C2 of α-D glucose.

**Options:**

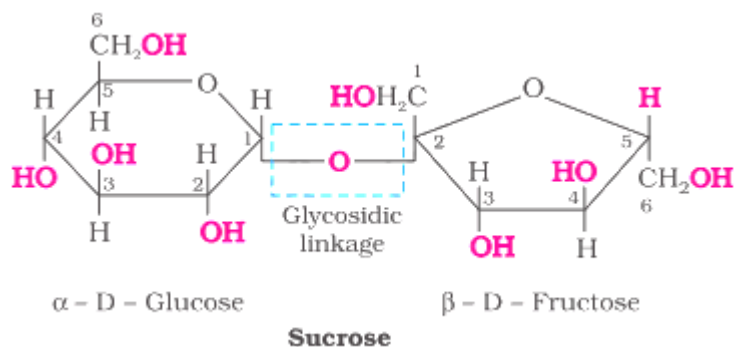
- (a) Both S1 and S2 are correct.
- (b) S1 is correct but S2 is incorrect.
- (c) S1 is incorrect but S2 is correct.
- (d) Both S1 and S2 are incorrect.

**Answer:** (b)

**Solution:** Sucrose: One of the common disaccharides is sucrose which on hydrolysis gives equimolar mixture of D-(+)-glucose and D-(-) fructose.



These two monosaccharides are held together by a glycosidic linkage between C1 of α-D-glucose and C2 of β-D-fructose. Since the reducing groups of glucose and fructose are involved in glycoside bond formation sucrose is a non-reducing sugar.



**Question:** S1: Sphalerite and copper glance are the sulphide ores of Zinc and Copper

S2: it is possible to separate two sulphide ores by adjusting proportion of oil to water or by using 'depressants'.

**Options:**

- (a) Both S1 and S2 are correct.
- (b) S1 is correct but S2 is incorrect.
- (c) S1 is incorrect but S2 is correct.
- (d) Both S1 and S2 are incorrect.

**Answer:** (a)

**Solution:**  $ZnS \Rightarrow$  Zinc blende or Sphalerite

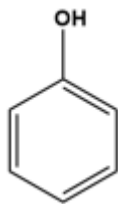
$Cu_2S \Rightarrow$  Copper glance or Chalcocite

Sometimes, it is possible to separate two sulphide ores by adjusting proportion of oil to water or by using depressants. For example, in case of an ore containing  $ZnS$  and  $PbS$ , the depressant used is  $NaCN$ . It selectively prevents  $ZnS$  from coming to the froth but allows  $PbS$  to come with the froth.

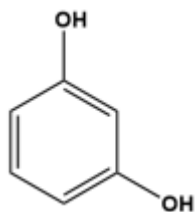
**Question:** Which will not react with phthalic anhydride?

**Options:**

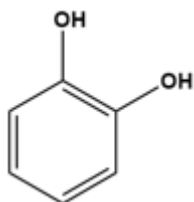
(a)



(b)



(c)



(d) All of these

Answer: (d)

**Solution:** Ortho will not react with phthalic anhydride, as it will form intermolecular hydrogen bonding.

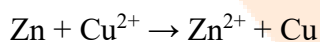
**Question:**  $\text{Zn} | \text{Zn}^{2+} (0.02 \text{ M}) || \text{Cu}^{2+} (0.04 \text{ M}) | \text{Cu}$

$$E_{\text{Zn}|\text{Zn}^{2+}}^{\circ} = 0.76, E_{\text{Cu}|\text{Cu}^{2+}}^{\circ} = -0.34$$

Find  $E_{\text{cell}}$ . (use  $\frac{2.303RT}{F} = 0.059$ )

**Answer:** 1.11

**Solution:**



$$E_{\text{cell}}^{\circ} = 0.34 - (-0.76) = 1.1 \text{ V}$$

$$E_{\text{cell}} = E_{\text{cell}}^{\circ} - \frac{0.059}{2} \log \frac{[\text{Zn}^{2+}]}{[\text{Cu}^{2+}]}$$

$$E_{\text{cell}} = 1.1 - \frac{0.059}{2} \log \frac{1}{2}$$

$$E_{\text{cell}} = 1.1 + \frac{0.059}{2} \log 2$$

$$E_{\text{cell}} = 1.1 + 0.0088795$$

$$E_{\text{cell}} = 1.1088795 \approx 1.11 \text{ V}$$

## JEE-Main-26-08-2021-Shift-2 (Memory Based)

### MATHEMATICS

**Question:**  $2 \sin \frac{\pi}{8} \sin \frac{2\pi}{8} \sin \frac{3\pi}{8} \sin \frac{5\pi}{8} \sin \frac{6\pi}{8} \sin \frac{7\pi}{8} = ?$

**Options:**

- (a)
- (b)
- (c)
- (d)

**Answer:**  $\frac{1}{8}$

**Solution:**

$$\begin{aligned}
 &= \sin^2 \frac{\pi}{8} \cdot \sin^2 \frac{3\pi}{8} \\
 &= \frac{\left(1 - \cos \frac{\pi}{4}\right) \left(1 - \cos \frac{3\pi}{4}\right)}{4} \\
 &= \frac{(\sqrt{2} - 1)(\sqrt{2} + 1)}{8} = \frac{1}{8}
 \end{aligned}$$

**Question:**  $\int_{-\frac{\pi}{2}}^{\frac{\pi}{2}} \frac{1 + \sin^2 x}{1 + \pi^{\sin x}} dx = ?$

**Options:**

- (a)
- (b)
- (c)
- (d)

**Answer:**  $\frac{3\pi}{4}$

**Solution:**

$$I = \int_{-\frac{\pi}{2}}^{\frac{\pi}{2}} \frac{1 + \sin^2 x}{1 + \pi^{\sin x}} dx \quad \dots(1)$$

$$\int_a^b f(x) dx = \int_a^b f(a+b-x) dx$$

$$I = \int_{-\frac{\pi}{2}}^{\frac{\pi}{2}} \frac{1 + \sin^2 x}{1 + \pi^{-\sin x}} dx \quad \dots(2)$$

$$(1) + (2)$$

$$I = \int_0^{\frac{\pi}{2}} (1 + \sin^2 x) dx$$

$$I = \frac{\pi}{2} + \frac{\pi}{4} = \frac{3\pi}{4}$$

**Question:**  $(\sqrt{3} + i)^{100} = 2^{99}(p + iq)$  then  $p$  and  $q$  are roots of which of the following equation ?

**Options:**

(a)  $x^2 - (\sqrt{3} + 1)x - \sqrt{3} = 0$

(b)  $x^2 - (\sqrt{3} - 1)x - \sqrt{3} = 0$

(c)

(d)

**Answer:** (b)

**Solution:**

$$(\sqrt{3} + i)^{100} = 2^{99}(p + iq)$$

$$\left(\frac{\sqrt{3} + i}{2}\right)^{100} = \frac{p + iq}{2}$$

$$\frac{1}{i^{100}} \left(\frac{-1 + \sqrt{3}i}{2}\right)^{100} = \frac{p + iq}{2}$$

$$\Rightarrow \omega^{100} = \frac{p + iq}{2}$$

$$\Rightarrow \omega = \frac{p + iq}{2}$$

$$\Rightarrow \frac{-1 + \sqrt{3}i}{2} = \frac{p + iq}{2}$$

$$\Rightarrow p = -1, q = \sqrt{3}$$

$p$  &  $q$  are roots of  $x^2 - (\sqrt{3} - 1)x - \sqrt{3} = 0$

$$x^2 - (\sqrt{3} - 1)x - \sqrt{3} = 0$$

**Question:**  $\begin{bmatrix} 1 & 0 & 0 \\ 0 & 1 & 1 \\ 1 & 0 & 0 \end{bmatrix} = A$ , then  $A^{2025} - A^{2020}$

**Options:**

- (a)  $A^5$
- (b)  $A^6$
- (c)  $A^6 - A$
- (d)  $A^5 - A$

**Answer:** (c)

**Solution:**

$$A = \begin{bmatrix} 1 & 0 & 0 \\ 0 & 1 & 1 \\ 1 & 0 & 0 \end{bmatrix}$$

$$A^2 = \begin{bmatrix} 1 & 0 & 0 \\ 0 & 1 & 1 \\ 1 & 0 & 0 \end{bmatrix} \begin{bmatrix} 1 & 0 & 0 \\ 0 & 1 & 1 \\ 1 & 0 & 0 \end{bmatrix}$$

$$= \begin{bmatrix} 1 & 0 & 0 \\ 1 & 1 & 1 \\ 1 & 0 & 0 \end{bmatrix}$$

$$A^3 = \begin{bmatrix} 1 & 0 & 0 \\ 1 & 1 & 1 \\ 1 & 0 & 0 \end{bmatrix} \begin{bmatrix} 1 & 0 & 0 \\ 0 & 1 & 1 \\ 1 & 0 & 0 \end{bmatrix}$$

$$= \begin{bmatrix} 1 & 0 & 0 \\ 2 & 1 & 1 \\ 1 & 0 & 0 \end{bmatrix}$$

$$\therefore A^{2025} - A^{2020} =$$



$$\begin{bmatrix} 1 & 0 & 0 \\ 2024 & 1 & 1 \\ 1 & 0 & 0 \end{bmatrix} - \begin{bmatrix} 1 & 0 & 0 \\ 2019 & 1 & 1 \\ 1 & 0 & 0 \end{bmatrix}$$

$$= \begin{bmatrix} 0 & 0 & 0 \\ 5 & 0 & 0 \\ 0 & 0 & 0 \end{bmatrix} = A^6 - A$$

**Question:**  $\alpha, \beta$  are roots of  $x^2 - x - \lambda = 0$  and  $\alpha, \gamma$  are roots of  $3x^2 - 10x + 27\lambda = 0$ . Find the value of  $\frac{\beta\gamma}{\lambda}$

**Solution:**

$$\begin{array}{l} x^2 - x - \lambda = 0 \begin{cases} \alpha \\ \beta \end{cases} \\ 3x^2 - 10x + 27\lambda = 0 \begin{cases} \alpha \\ \gamma \end{cases} \end{array}$$

$\therefore \alpha$  is common root

$$\therefore -7\alpha + 30\lambda = 0$$

$$\alpha = \frac{30\lambda}{7}$$

$$\therefore \frac{900\lambda^2}{49} - \frac{37\lambda}{7} = 0$$

$$\lambda = \frac{37 \times 7}{900} = \frac{259}{900}$$

$$\alpha\beta = -\lambda \Rightarrow \beta = \frac{-\lambda}{\alpha}$$

$$\alpha\gamma = 9\lambda \Rightarrow \gamma = \frac{9\lambda}{\alpha}$$

$$\therefore \frac{\beta\gamma}{\lambda} = \frac{-9\lambda}{\alpha^2} = \frac{-9 \times 7}{900\lambda^2}$$

$$= \frac{-9}{37}$$

**Question:**  $f(x) = \left(\frac{2}{x}\right)^{x^2}$ . Find minimum value of  $f(x)$

**Options:**

- (a)
- (b)
- (c)
- (d)

**Answer:** ( )

**Solution:**

$$y = \left(\frac{2}{x}\right)^{x^2}$$

$$\ln y = x^2 [\ln 2 - \ln x]$$

$$y' = y \left[ \ln\left(\frac{2}{x}\right) \cdot 2x - x \right]$$

$$y' = 0 \Rightarrow \ln \frac{4}{x^2} = 1$$

$$x^2 = \frac{4}{e} \Rightarrow x = \pm \frac{2}{\sqrt{e}}$$

$$\therefore y_{\min} = (\sqrt{e})^{\frac{4}{e}} = e^{\frac{2}{e}}$$

**Question:**  $\lim_{x \rightarrow 2} \sum_{n=1}^9 \frac{x}{n(n+1)x^2 + 2(2n+1)x + 4}$

**Answer:**  $\frac{9}{44}$

**Solution:**

$$\sum_{n=1}^9 \frac{x}{(n^2x^2 + 4nx + 4) + x(nx + 2)}$$

$$= \sum_{n=1}^9 \frac{x}{(nx + 2)^2 + x(nx + 2)}$$

$$= \sum_{n=1}^9 \frac{x}{(nx + 2)(nx + x + 2)}$$

$$= \sum_{n=1}^9 \frac{(nx + x + 2) - (nx + 2)}{(nx + 2)(nx + x + 2)}$$

$$\begin{aligned}
 &= \sum_{n=1}^9 \frac{1}{(nx+2)} - \frac{1}{(nx+x+2)} \\
 &= \frac{1}{x+2} - \frac{1}{2x+2} + \frac{1}{2x+2} - \frac{1}{3x+2} + \dots \\
 &= \frac{1}{x+2} - \frac{1}{10x+2} \\
 f(x) &= \frac{9x}{(x+2)(10x+2)} \\
 \therefore \lim_{x \rightarrow 2} f(x) &= \frac{18}{4 \times 22} \\
 &= \frac{9}{44}
 \end{aligned}$$

**Question:** If the line  $x = 2y$  touch circle  $C$  at  $(2, 1)$  and  $C$  cuts  $C_1 : x^2 + y^2 + 2y - 5 = 0$  such that common chord is diameter of  $C_1$ . Find diameter of  $C$ .

**Answer:**

**Solution:**

$x = 2y$  touch circle at  $(2, 1)$

Equation of circle

$$\Rightarrow (x-2)^2 + (y-1)^2 + \lambda(x-2y) = 0$$

$$\Rightarrow x^2 - 2x + 4 + y^2 - 2y + 1 + \lambda x - 2\lambda y = 0$$

$$\Rightarrow x^2 + y^2 + x(\lambda - 2) + y(-2 - 2\lambda) + 5 = 0$$

Common chord with  $C_1$  is

$$\Rightarrow x(\lambda - 2) + y(-4 - 2\lambda) + 10 = 0$$

It passes through  $(0, -1)$

$$\Rightarrow 0(\lambda - 2) - 1(-4 - 2\lambda) + 10 = 0$$

$$\Rightarrow 4 + 2\lambda + 10 = 0$$

$$\Rightarrow \lambda = -7$$

$\Rightarrow$  Equation of circle is

$$\Rightarrow x^2 + y^2 - 9x + 12y + 5 = 0$$

$$\begin{aligned}
 r &= \sqrt{\left(\frac{9}{2}\right)^2 + 6^2} - 5 \\
 &= \sqrt{\frac{81}{4} + 36} - 5 \\
 &= \sqrt{\frac{81}{4} + 31} = \sqrt{\frac{81+124}{4}} \\
 &= \sqrt{\frac{205}{4}} \\
 d &= \sqrt{205}
 \end{aligned}$$

**Question:** Find locus of mid point of chord of  $x^2 - y^2 = 4$  such that this chord touched  $y^2 = 8x$ .

**Options:**

- (a)
- (b)
- (c)
- (d)

**Answer:** ( )

**Solution:**

Let mid point be (h, k)

Chord is  $T = S_1$

$$x^2 - y^2 - 4 = 0$$

$$\Rightarrow hx - ky - 4 = h^2 - k^2 - 4$$

$$\Rightarrow hx - ky = h^2 - k^2$$

$$\Rightarrow ky = hx - h^2 + k^2$$

$$\Rightarrow y = \frac{h}{k}x + \frac{(k^2 - h^2)}{k}$$

Above line is tangent to  $y^2 = 8x$

$$\Rightarrow c = \frac{2}{m}$$

$$\Rightarrow \frac{k^2 - h^2}{k} = \frac{2}{\frac{h}{k}}$$

$$\Rightarrow h(k^2 - h^2) = 2k^2$$

$$\Rightarrow x(y^2 - x^2) = 2y^2$$

**Question:**  $\sum_{r=1}^9 \tan^{-1}\left(\frac{1}{2r^2}\right) =$

**Options:**

- (a)
- (b)
- (c)
- (d)

**Answer:** ( )

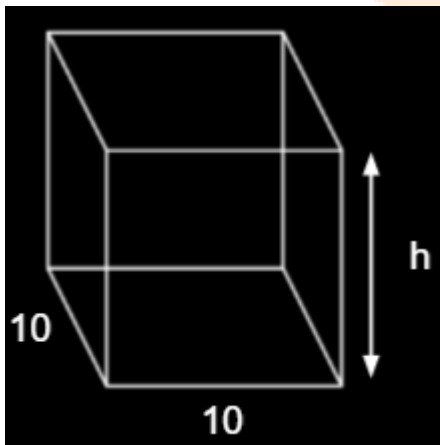
**Solution:**

$$\tan^{-1}\left(\frac{2}{4r^2}\right) = \tan^{-1}\left[\frac{(2r+1) - (2r-1)}{1 + (2r+1)(2r-1)}\right]$$

$$= \tan^{-1}(2r+1) - \tan^{-1}(2r-1)$$

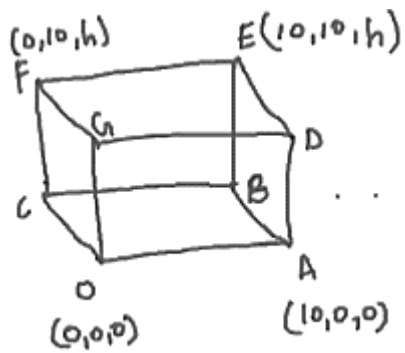
$$\therefore \sum_{r=1}^9 \tan^{-1}\left(\frac{1}{2r^2}\right) = \tan^{-1}(19) - \frac{\pi}{4}$$

**Question:** Angle between two body diagonal is  $\cos^{-1}\left(\frac{1}{5}\right)$ . Find  $h$ .



**Answer:** ( )

**Solution:**



$$\text{Let } \vec{a} = \overrightarrow{OE} = 10\hat{i} + 10\hat{j} + h\hat{k}$$

$$\vec{b} = \overrightarrow{AF} = -10\hat{i} + 10\hat{j} + h\hat{k}$$

$$\therefore \cos \theta = \frac{\vec{a} \cdot \vec{b}}{|\vec{a}| |\vec{b}|}$$

$$\frac{1}{5} = \frac{h^2}{\sqrt{200+h^2}}$$

$$24h^2 = 200$$

$$h^2 = \frac{200}{24} = \frac{25}{3}$$

$$\therefore h = \frac{5}{\sqrt{3}}$$

**Question:** Minimum value of 'n' for which  $\frac{(2!)^n}{(1+i)^{n-2}}$  is positive integer.

**Answer:** 6

**Solution:**

$$\frac{(2i)^n}{(1+i)^{n-2}} = \frac{(2i)^n \times (1-i)^{n-2}}{((1+i)(1-i))^{n-2}}$$

$$= \frac{2^n \cdot i^n \cdot (1-i)^n}{(1-i)^2 (2)^{n-2}}$$

$$= \frac{4i^n (1-i)^n}{-2i}$$

$$= \frac{4(1+i)^n}{-2i}$$

$$(1+i)^2 = 2i$$

$$(1+i)^4 = -4$$

$$(1+i)^6 = -8i$$

Hence for  $n = 6$  given expression will become  $\frac{4(-8i)}{-2i} = 16$

**Question:**  $\int_0^5 \frac{x + [x]}{e^{n-[x]}} dx = \alpha e^{-1} + \beta$ , then  $(\alpha + \beta)^2 = ?$

**Answer:** 25

**Solution:**

$$\int_0^1 \frac{x}{e^x} dx + \int_1^2 \frac{x+1}{e^{x-1}} dx + \int_2^3 \frac{x+2}{e^{x-2}} dx + \int_3^4 \frac{x+3}{e^{x-3}} dx + \int_4^5 \frac{x+4}{e^{x-4}} dx$$

$$\int_0^1 x e^{-x} dx = x(-e^{-x}) - e^{-x} \Big|_0^1$$

$$= (-e^0 - e^{-1}) - (0 - e^{-0})$$

$$= \frac{-2}{e} + 1$$

$$\int_1^2 (x+1)e^{1-x} dx = -(x+1)e^{1-x} - e^{1-x} \Big|_1^2$$

$$= (-(3)e^{-1} - e^{-1}) - (-2e^0 - e^0)$$

$$= \frac{-3}{e} - \frac{1}{e} + 3$$

$$= \frac{-4}{e} + 3$$

$$\int_2^3 (x+2)e^{2-x} dx = -(x+2)(e^{2-x}) - e^{2-x} \Big|_2^3$$

$$= -(5)e^{-1} - e^{-1} - (-4e^0 - e^0)$$

$$= \frac{-6}{e} + 5$$

$$\int_3^4 (x+3)e^{3-x} dx = -(x+3)e^{7-x} - e^{7-x} \Big|_3^4$$

$$= -7e^{-1} - e^{-1} - (-6e^0 - e^0)$$

$$= \frac{-8}{e} + 7$$

$$\int_4^5 (x+4)e^{4-x} dx = -(x+4)e^{4-x} - (e^{4-x}) \Big|_4^5$$

$$= (-9e^{-1} - e^{-1}) - (-8e^0 - e^0)$$

$$= \frac{-10}{e} + 9$$

$$\Rightarrow I = \frac{-30}{e} + 25$$

$$\Rightarrow \alpha = -30 \text{ and } \beta = 25$$

$$(\alpha + \beta)^2 = 25$$



Thank You  
for downloading the PDF

**FREE** LIVE ONLINE

# MASTER CLASSES

FREE Webinars by Expert Teachers



Vedantu

## FREE MASTER CLASS SERIES

- ✔ For **Grades 6-12th** targeting **JEE, CBSE, ICSE** & much more
- ✔ **Free 60 Minutes Live Interactive** classes everyday
- ✔ Learn from the **Master Teachers** - India's best

Register for **FREE**

Limited Seats!